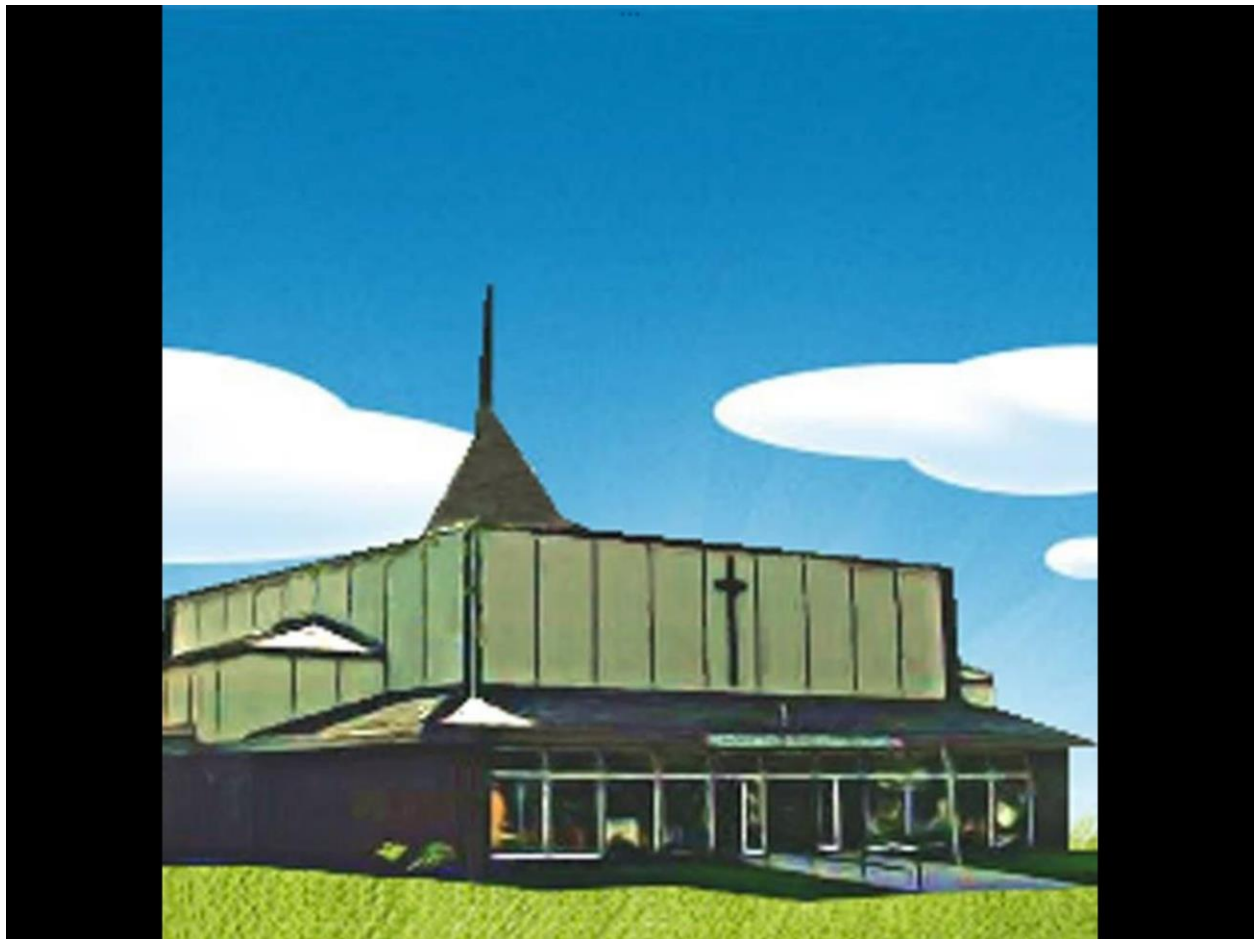


Redeemer Lutheran Worship Team Handbook



Redeemer Lutheran Church

Worship Team Handbook

Redeemer Lutheran Church is a community of faith composed of people gifted with many talents. Our community of faith grows and is strengthened as we work together sharing our gifts. Redeemer encourages the congregation to participate in the life of the church as they are called and able.

Redeemer offers many possibilities for participation and inclusion which enhance our faith experience. Sunday worship, women's and men's Bible studies, choir, or quilting are some of the activities happening at Redeemer. There are also many opportunities to participate by volunteering. As our church evolves, so do various opportunities for service. This Handbook is an overview of possibilities at the present time; it may not be totally inclusive of opportunities to serve, as our needs change over time. Individuals new to a task are given guidance. They receive orientation and are "buddied" with a seasoned veteran. If you are interested in an area of service or volunteering, please talk to Pastor Trent or phone the church (306-374-7585) to indicate your willingness to volunteer and be a part of the face of Redeemer.



Greeters (arrival about 45-50 minutes before the service)

It is always meaningful to be seen and welcomed at church. Greeters are the first human face visitors and members see when they enter our church.

greeters

The Greeters primary duty is to welcome people to worship. Greeters cheerfully welcome people who come through the door, as well as those who have hung their coats up and are on their way to the stairs. If there is any specific assistance (such as need of the elevator) Greeters direct people to one of the Ushers for that Sunday.

Simply put, we are asking those involved to be available to, and welcoming of, all who enter our doors on a Sunday. Your smile and demeanor are of immeasurable worth.

Ushers. (arrival about 45-50 minutes before the service)

Ushers are vital for a smooth service. They assist the congregation as we prepare for worship, direct the orderly progress of Communion, assist those requiring the elevator and count those worshipping for a record of attendance.

Ushers have a variety of tasks from turning lights on and off, assisting any late-comers, general safety and security and taking the recycling out.

Coffee/Cookie Set-up (arrival about 35-40 minutes before the service)



Food and fellowship go hand in hand. Coffee and Cookies after our service provide a venue for our membership to meet others and form friendships in a Christian Community.

Coffee/Cookie Set-up duties involve making coffee, juice and plating cookies before the service begins and the replenishment of cookies, cream, sugar and coffee during the social time after the service.

Coffee/Cookie Clean-up (about 30-45 minutes after the service)

After enjoying coffee and cookies, the clean-up shift begins. Clean-up involves gathering coffee mugs, plates and the like and running them through the dishwasher.

Coffee Clean-up volunteers are requested to stay until everyone leaves and then lights need to be turned off and doors locked.

Communion

Holy Communion is a Sacrament that Redeemer celebrates in a variety of ways, depending on the time and the season.



Redeemer Lutheran accepts all at the Communion table. The Pastor will give directions.

Communion Set-up/Clean- up (30 minutes before the service. Please note that you will be required to climb steps from the preparation area in the Sacristy to the Sanctuary)

A vital component of providing Communion to the congregation lies in preparation of the Communion elements. This involves preparing the trays of wine and juice (disposable cups are currently used) and the bread (gluten and gluten-free options). A small round loaf is stored in the kitchen freezer and is used for display on the Altar, along with a small amount of wine in a Chalice cup.

Designated volunteers prepare the Communion bread in advance of services. Bread is cubed, brought to the church and stored in the freezer.

During Communion, those who are administering the elements will need replenishment of the bread and wine.

At the end of the service there is some cleanup needed - putting trays etc. away.

Communion Assistants (called to the front during the service)

Communion is administered at two stations at the front of the church, with ushers guiding participants to each station. Two individuals offer the Communion elements at each station. One presents the "bread" and the other the "wine". Juice and gluten-free bread options are also available.

Assistants may also need to bring Communion to individuals who find it difficult, or are unable, to walk to the Communion Stations.

Readers (during the service)



The reading of Scripture and Offering of Prayers is a key element in our worship as a people of faith. Those with a gift of public speaking and comfort with using microphones are encouraged to participate as Readers, as it is vital that this is done well to enhance our service.

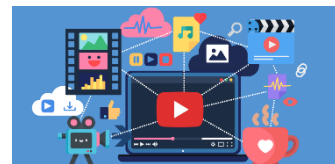
Readers receive the readings and prayers several days before the service. They are encouraged to “practice” in advance of the service.



Choir (during the service, 1 practice is available each week)

The power of music and of creating art together is truly an offering to the Lord! The choir at Redeemer Lutheran is composed of many who enjoy singing. It is an inclusive group that accepts all and does not have an attendance requirement. The main purpose is to enhance the service and provide joy in the Word of the Lord.

Technical Team (during the service, PowerPoint building outside of service time)



Technology has become an integral part of our worship experience, from effective microphone placement and usage to the well-developed PowerPoints and overhead screens which guide our service with hymns, prayers and visuals. Our online services are a lifeblood and provide an important connection for those who are travelling or may be isolated at home.

If you are technically inclined, this is a tremendously vital ministry.



Offering Counters (30 minutes after the service)

Offering counters are invaluable, trusted individuals.

Counters collect the offering from the offering plates in the Sanctuary and then sort, count and accurately record the giving.

Inter-generational Events (with a duration of one to two hours after the service - these currently occur once a month)

These **GIFT (Growing in Faith Together)** events follow the regular Sunday worship and offer an opportunity for children, parents, grandparents, and others to gather for the purpose of faith development and community building. These events consist of Biblical storytelling around a chosen theme, accompanied by an activity/craft and followed by a simple lunch shared by all.



Before each event, leaders will plan and prepare activities and meals. Volunteers are needed to help prepare and serve the meal and to clean up following the event.

General Note

Please be aware that if you are the last person to leave the church, you need to check that the lights are off and doors are locked.

